



COMPAGNIE MARITIME  
**CHAMBON**

Compagnie Maritime CHAMBON  
3/5 Rue Beauvau - CS 90107 - 13231 Marseille Cedex 01 - FRANCE  
Phone: +33(0)4 96 11 11 55 - E-mail: cmc@cmchambon.com  
www.cmchambon.com

# CHAMBON ALIZÉ



OWNER	AHTS	POWER	BOLLARD PULL
Cie Maritime Chambon	Remorqueur Supply	4800 BHP	58 tons

THE FIRST MULTIPURPOSE **ANCHOR HANDLING TUG SUPPLY** vessel specially designed for the offshore renewable energies operations. An accurate and sophisticated manoevrability are key features for the « *Chambon Alizé* » as it is equipped with Dynamic Positioning I.

**AHTS** plus 58 tons double drum waterfall winch in conjunction with a large stern roller to provide faster solution in anchor handling.

**AHTS** plus a clear deck space of 210 m<sup>2</sup> is the ideal surface support vessel for all diving and submarine purpose able to stay "on the spot" or to proceed at very low speed even in adverse currents, winds and seas.

**AHTS** plus a crane capacity SWL, 3,6 Tons at 10,75 meters.

**AHTS** plus a powerful auxiliary engine allows to supply electricity to offshore installations.

**LARGE AND COMFORTABLE ACCOMMODATIONS FOR OFFSHORE PASSENGERS, AIR CONDITIONED AND SOUND-PROOFED LIVING AREAS.**



## DESCRIPTION

Type: 4 bladed in nozzle 2 controlable pitch propellers Finnoy 2100 mm  
Ship Yard: Bogazici, Turquie  
Flag: French  
Class: Bureau Veritas 1 + hull + mach, Tug, supply vessel, Dynapos AM/AT DP 1  
Construction date: june 2012  
Categorie: Unrestricted navigation + AUT-UMS, Navigation Area 2

## DIMENSIONS

Length overall: 45,00 m  
Breadth module: 13,60 m  
Draft: 3,60 m  
Gross Ton: 398 GT



## PROPULSION SYSTEM

Main Engines ..... 2 units ABC model 8 DZC rated 2400 BHP at 1000 rpm  
Propellers ..... 2 sets of controlable pitch propeller, in fixed nozzle with 2 streamlined double plate Rudders  
Bow Thruster ..... 1 bow thruster 400 KW  
Stern Thruster ..... 1 stern thruster 400 KW  
Tanks Capacities ..... Fuel 350 m<sup>3</sup>, Fresh water 120 m<sup>3</sup>, ballast tanks 160 m<sup>3</sup>, oil dispersant 4 m<sup>3</sup>, sewage tanks 12 m<sup>3</sup>  
Bollard pul ..... 58 tons  
Speed ..... 12 knots  
Cruising Range ..... 25 days at 80% load

## AUXILIARY

Main Gen Set: ..... 3 x Volvo marine D12 290 KW at 1500 rpm 440/3/50, 3 wires  
Harbor Generator: ..... 1 x Volvo marine D5A TR C, 62 KW at 1500 rpm, 440/3/60, 3 wires  
Shaft Alternators: ..... 600 KW driven by each main engine, 3 phases, 400 V, 50Hz, 1500 rpm, 2 x Compressed Air System Atlas Copco, 1 x Biological Treatment System

## FIRE FIGHTING FIFI ONE

Pumps: 2 x main pumps driven by main engine 1426 m<sup>3</sup> each  
Guns: 2 x guns mixte FFS 1400 m<sup>3</sup> each, wheelhouse remote control  
Foam capacity: 23 m<sup>3</sup>



## DECK LAY-OUT

Anchor Windlass: ..... 1 x electro-hydraulic anchor Windlass fitted with warping heads, 14,9 tons  
Towing winch: ..... 1 x winch aft deck, double drums, water fall, 150 tons holding, 50 tons x 10 m/mn on 1st layer, 1 x 1000 m x 48 mm Ø, wire 1 x 700 m x 42 mm Ø, wire  
Second Drum: ..... 1 x 1000 m x 48 mm Ø  
Tugger Winch: ..... 2 units of 5 tons, one 5 tons Positioning Windlass  
Stern Roller: ..... 1 x roller 710 x 2200 mm, 70 tons SWL Shark jaw and 1 double set electro-hydraulic operated combination anchor handling  
Towing pins: ..... Kam Fork and towing pin for chain from 32 mm to 102 mm, SWL to be 200 tons  
Containers Sockets: ..... 3 sets containers foundations for 20 containers  
Clear Deck: ..... Surface 210 m<sup>2</sup>, (21 m x 10 m)  
Crane: ..... 1 x crane, capacity SWL 3,6 tons at 10,75 meter outreach

## NAUTICAL AND COMMUNICATION EQUIPMENT

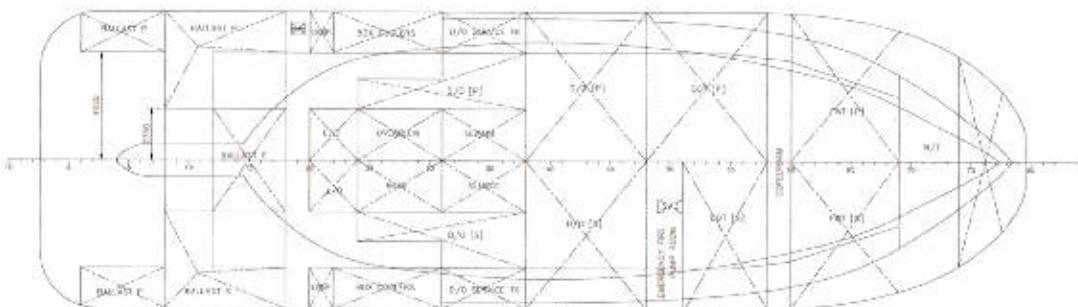
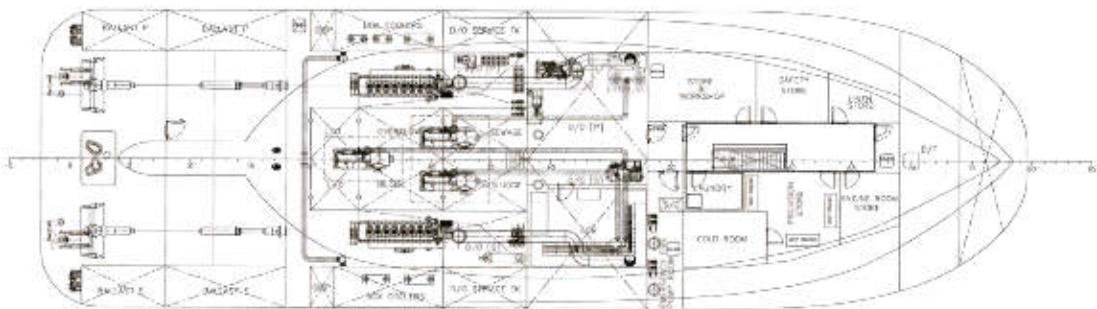
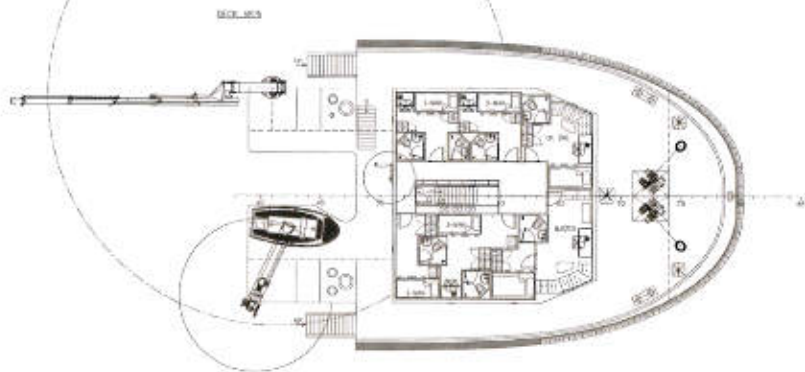
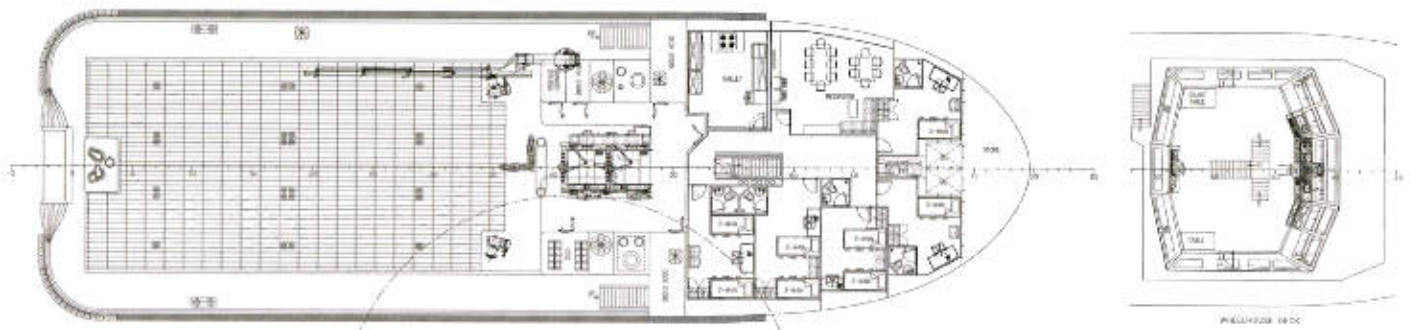
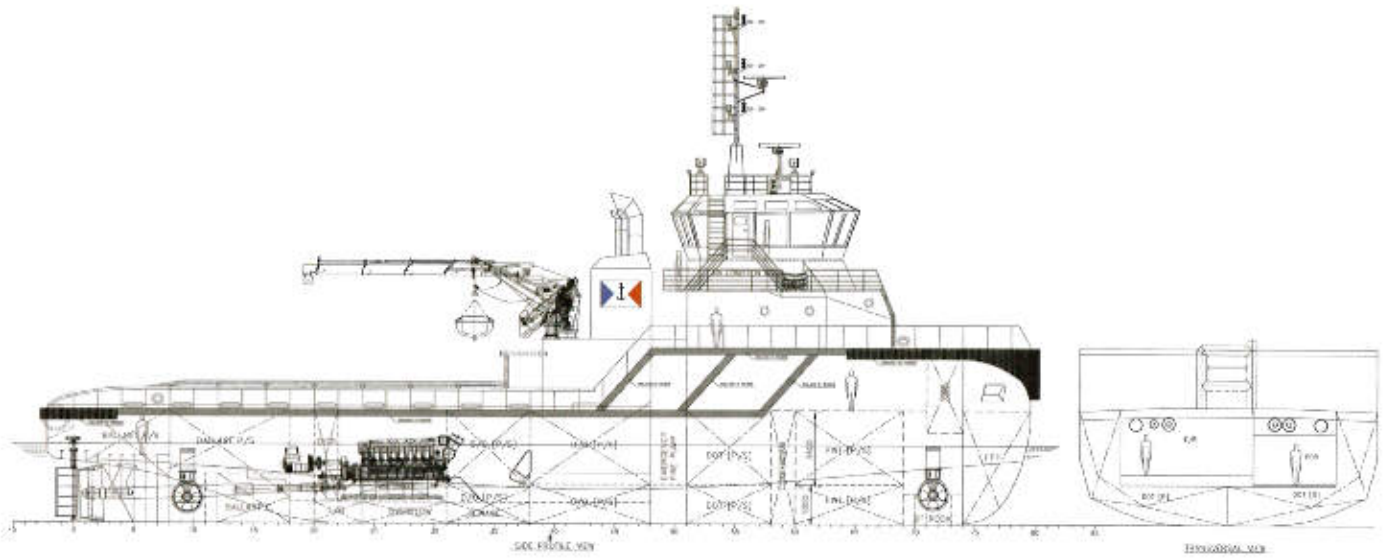
International Solas Navigation area 2  
Communication equipments GMDSS zone 2  
DP 1 NAVIS NAVDP 4000

## ACCOMODATION

24 persons,  
4 cabins for 1,  
3 cabins for 2,  
2 cabins for 4,  
1 cabin for 6,  
1 hospital.  
Air conditioning.











COMPAGNIE MARITIME  
**CHAMBON**

3/5 Rue Beauvau - CS 90107  
13231 Marseille Cedex 01 - FRANCE

Phone : +33(0)4 96 11 11 55 - E-mail : [cmc@cmchambon.com](mailto:cmc@cmchambon.com) - [www.cmchambon.com](http://www.cmchambon.com)